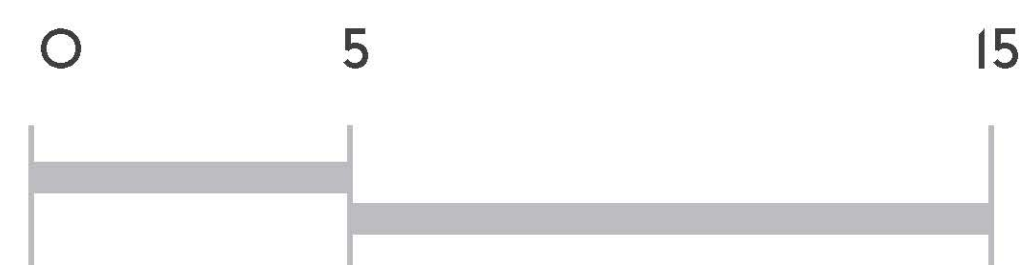
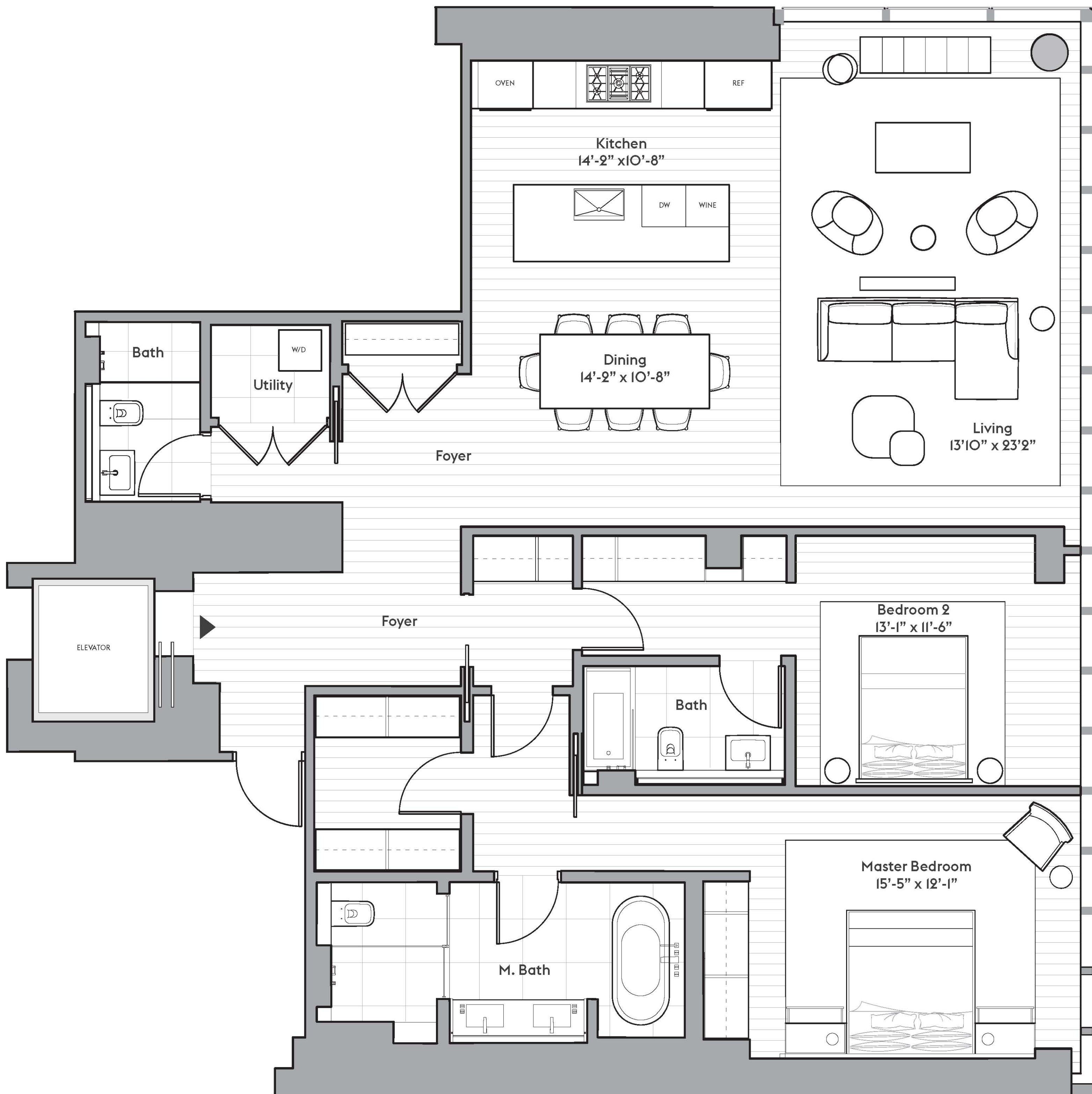


Five One Five

2S 1,895 SQF 2 Bedroom, 3 Bathroom

515 W 29th St.
FiveOneFiveNYC.com

212.419.8515
515w29@corenyc.com



Key Features

- Marble heated bathroom floors
- 3 types of Molteni closet build-outs
- Mobile-controlled Lutron HomeWorks QS System for electronics, temperature control and lighting.
- European-engineered light oak floors
- Solar shades by Lutron Savoia
- Delta LED light fixtures
- Door hardware by Franz Schneider Brakel
- Molteni millwork
- Bulthaup kitchens
- Gaggenau appliances
- Miele washer/dryer

CORE FORUM ABSOLUTE

All dimensions are approximate and subject to normal construction variances and tolerances. Square footage exceeds the usable floor area and includes columns, mechanical pipes shafts, hallway, chaseways and conduits and other Common Elements. Sponsor reserves the right to make changes in accordance with the terms of the Offering Plan. Plans and dimensions may contain minor variations from floor to floor as set forth in the Offering Plan. The complete offering terms are in an Offering Plan available from Sponsor. File No. CD14-0186.

We are pledged to the letter and spirit of U.S. policy for the achievement of equal housing opportunity throughout the nation. We encourage and support an affirmative advertising and marketing program in which there are no barriers to obtaining housing because of race, color, religion, sex, handicap, familial status, or national origin.