



November 15, 2018

CityRealty: Three Unique Condo Buildings Debut Near the High Line and Hudson Yards

By **Michelle Mazzarella**

Impressions: 195,152

<https://www.cityrealty.com/nyc/market-insight/features/future-nyc/three-unique-condo-buildings-debut-near-high-line-hudson-yards/25821>

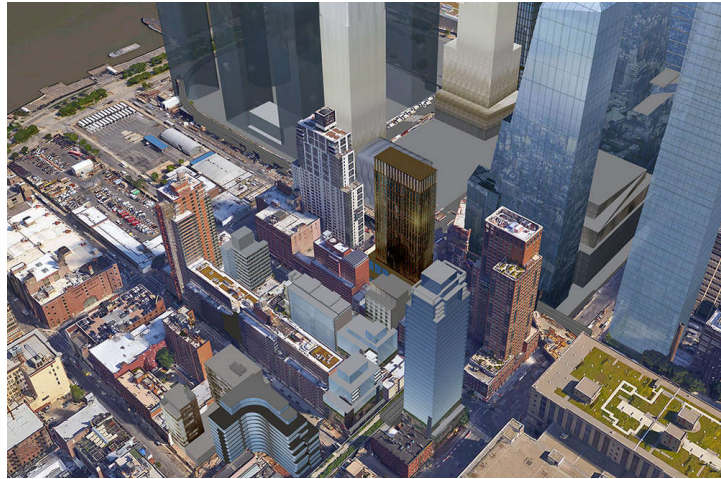


(l-r) Five One Five, Soori High Line, and 550 West 29th Street

If West Chelsea is home to some of Manhattan's most architecturally-inspired new buildings, West 29th Street between Tenth and Eleventh avenues stands out as one of its most eye-catching blocks. Its location at the foot of Hudson Yards and bisected by the High Line invites developers and designers to reach for the stars to woo all the creative talent and high earners that will be flooding into the neighborhood in the coming years.

As we previously reported, five new developments have opened their doors on the block and three more are on the way. We took a look at the latest three condos to debut: Five

One Five, Soori High Line, and 550 West 29th Street to see how the developers and architects seized the opportunity and to check in with what's left on the market.

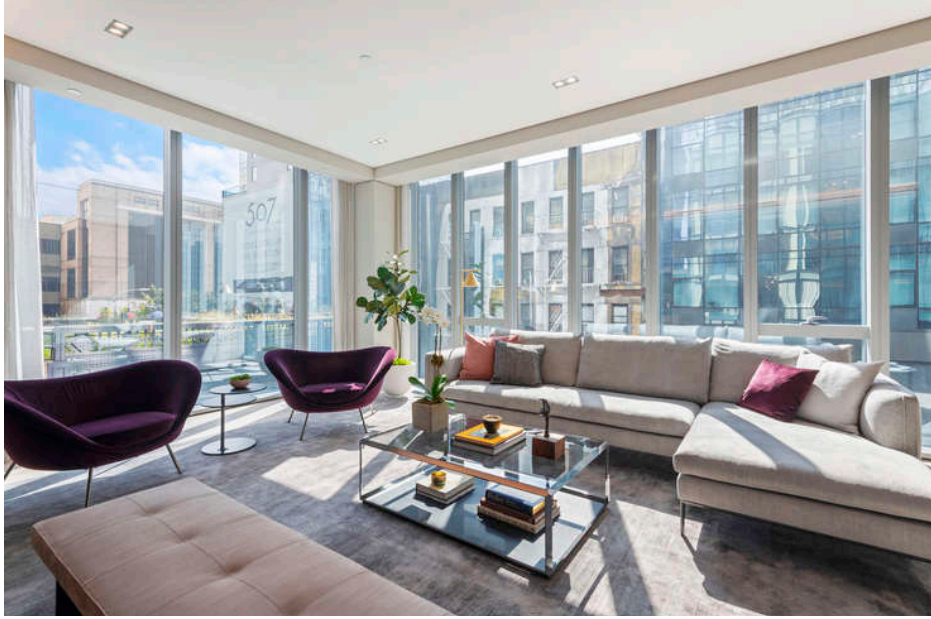


Google Earth aerial showing block of 29th Street between Tenth and Eleventh avenues

Five One Five, 515 West 29th Street
Developed by Forum Absolute Capital Partners, Design by Soo K. Chan
4 Available Units from \$3.975 Million



All images of Five One Five via CORE



Living Room



Dining area



Kitchen



Study



Master Bedroom

Five One Five

5N 2,133 SQF 2 Bedroom, 3 Bathroom

5N 5086 5L
FiveOneFive.com
888-441-8888
5L@FiveOneFive.com



Key Features

- Hardwood-look Laminate Flooring
- Kitchen Island with Seating
- Kitchen with Quartz Countertops and Under-Cabinet Lighting
- Hardwood-style Engineered Light Oak Flooring
- White Double In-Line Kitchen Cabinets
- White-Enamel High Kitchen Cabinets
- White-Enamel Kitchen Island
- Kitchen with Quartz Countertops and Under-Cabinet Lighting
- Hardwood-style Engineered Light Oak Flooring
- White Double In-Line Kitchen Cabinets
- White-Enamel High Kitchen Cabinets
- White-Enamel Kitchen Island



© 2015 FiveOneFive.com

Floor Plan

At Five One Five, both the building and the homes within feature architect Soo K. Chan's minimalist aesthetic. Apartment #5N, a spacious 2-bedroom, 3-bath listed for \$5 million, is reached by keyed elevator and features amazing natural light, High Line views through floor-to-ceiling windows, 10' ceilings, a home office, warm wood and smooth stone palettes, and custom closets and wardrobes throughout. The Bulthaup kitchen is equipped with quartz countertops, a multipurpose island, aluminum backsplash, and full suite of Gaggenau appliances. Amenities include a 24-hour attended lobby, fitness center, private storage, and roof deck with kitchen.

Soori High Line, 522 West 29th Street
Developed by Siras Oriel Development LLC, Design by Soo K. Chan
6 Available Units from \$3.3 Million



All images of Soori High Line #7A via Douglas Elliman

Manhattan has seen some truly luxurious apartments in recent years, but nothing to compare to Soori High Line's condos with enclosed and heated saltwater pools. Apartment **7A**, a 5-bedroom, 5-bath duplex listed for \$8.998 million, is situated on the highest available floor of the pool residences. On the principal level, a double-height living room boasts a soaring 18' ceiling, gas fireplace, and floor-to-ceiling windows that flood the room with light. This level is also home to a chef's dream kitchen and a south-facing master suite with a private terrace, nearly 15' deep walk-in closet, and marble five-fixture bath overlooking the pool. Directly upstairs are three bedroom suites and another private terrace. Residents have access to the building's fitness and spa suite, yoga and Pilates studio, lounge, and private parking.

550 West 29th Street
Developed and Designed by Cary Tamarkin
4 Available Units from \$3.75 Million



All images of 550 West 29th Street via CORE

In line with Cary Tamarkin's work throughout West Chelsea, 550 West 29th Street has an elegantly proportioned facade of handcast limestone Roman bricks and massive metal casement windows. Apartment 3A, a 3-bedroom, 3.5-bath duplex listed for \$4.5 million, boasts 20' ceilings, more than 2,100 square feet of interior space, its own private storage room, and a state-of-the-art intercom and video security system. The entry level's Great Room is filled with incredible light from the casement windows. Elsewhere on this level, a custom-designed chef's kitchen has Pietra Cardosa countertops and top-of-the-line appliances. The upstairs bedrooms enjoy excellent privacy, proportions, and closet space. A white-glove amenity package includes a full-time doorman and super, fitness room, sauna, laundry room, and bike room.